

Manurewa Marae Goals

1. Whanau Ora Services:

To ensure we have services available that is beneficial for the communities' well being.

2. Te Manu Aute Whare Oranga:

To establish a Whare Oranga Facility that will cater for clinical and Rongoa Maori services for the well being of the community.

3. Mana Motuhake:

To promote the Maraes autonomy towards self sufficiency.

4. Te Wai o te Puhinui:

Enhancing and beautifying the area surrounding the Manurewa Marae and the foreshores of Puhinui, for a jetty and boating ramp.

5. Marae Refurbishments:

To complete renovations around the Marae, in order to sustain and achieve the long term goals.

Some programmes and events which we have held on the Manurewa Marae include:

COMETS

Healing Our Spirits (Community Hui)

Official welcoming of his worship the

Mayor of Manukau City Len Brown

Nga Taonga – Kingitanga Flag Ceremony

Matariki Celebrations for Manurewa

Raukura Hauora Hoe Down

BMETS Holiday Program

Te Tai Tonga Kapa Haka Regionals

Asian / Chinese Hui

Mens Diabetic Support Groups

Mana Tane and Mana Wahine Days

Manurewa Ora Day

Te Aburea Tinorangatiranga Kapa Haka

Mental Health First Aid

Marae Youth Justice Court

Manurewa Marae Past Events and Programmes

PO Box 88-161
Clendon
Auckland

Manurewa Marae

Send to:
81 Finlayson Avenue, Clendon, Manurewa
PO Box 88161, Clendon
Alternatively fax to:

Place
Stamp
Here

Manurewa Marae

Whare Tipuna, Whare
Kai, Whare Matauranga,
Whare Oranga

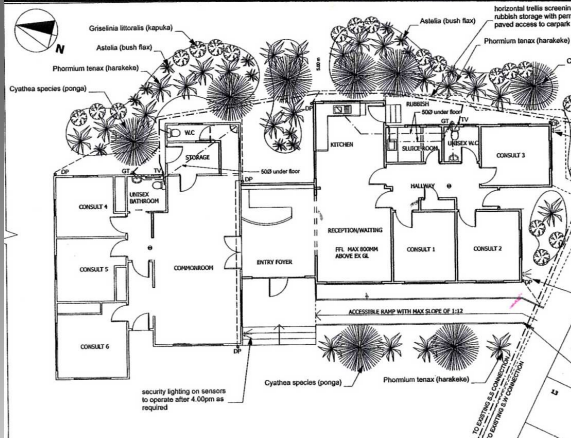
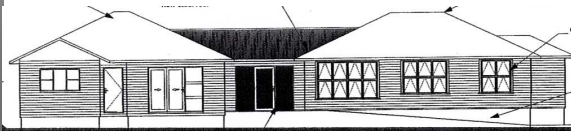
**TE MANU AUTE
WHARE
ORANGA**

**INTEGRATED
WHANAU
COMMUNITY
HEALTH**



Manurewa Marae - Whare Oranga

Manurewa Marae is committed to improving access to health and social services for Maori through Whare Oranga. Whare Oranga is an integrated whanau community health centre with the aim of being able to provide the right services for our whaanau from the right place. From the development of our Whare Kai and Whare Tupuna in May 2010 we will soon have our Whare Oranga. Whare Oranga is open to all whaanau (families) living in Counties Manukau.



Above are the plans of the Whare Oranga which will open on the 1st May 2010. The right side of the building on entry will have all the clinical health and social services and the left side of the whare will provide our alternative health services.

Service Provided

- FREE General Practitioner (all ages)
- FREE Nursing Services (all ages)
- Cervical Smears
- Smoking Cessation
- Whanau Health Checks
- FREE Health Transportation Service
- The Chronic Care Management Programme (CCM)
- Immunisations
- Suicide Prevention
- Physical Activities and Nutrition
- Breast Feeding Services
- Podiatry (Feet) Services
- Social Services
- Traditional Healing services
- Maori Rongoa Services
- Mirimiri (Massage)

Clinical and Alternative Services

Manurewa Marae is excited to be able to offer whanau the best of both worlds, within the one whare (facility). All alternative services will differ daily depending on availability of alternative practitioners.

Whare Oranga Registration Form

If you would like to enroll within our Whare Oranga, please complete the following, and we will forward an enrolment form to you?

Name _____

Address _____

Phone / Mobile _____

Email _____

Iwi (Tribe) _____

Hapu (Sub-Tribe) _____

Signature _____

How many other's in your whanau (family) would you like to register?

Comments:

Manurewa Marae

Send to:
81 Finlayson Avenue, Clendon, Manurewa
PO Box 88161, Clendon
Alternatively fax to:
(09) 267 8768

Phone: (09) 267 8768
Fax: (09) 267 8768
E-mail: matukutureia@manurewamarae.co.nz

Contact Person: Lorraine Byers